

# ALLEx<sup>®</sup> Mini

12 samples 20 min DNA/RNA extraction Protocol QR code scanning Auto strip install



▶ 제품 정보

## Feature

### 실용적인 디자인

- 최대 12개의 샘플 처리 가능 (소량 핵산 추출에 적합)
- 공간 활용이 우수한 작고 가벼운 디자인

### 저소음 설계

- 작동 소음 최소화 (≤ 45 dB)

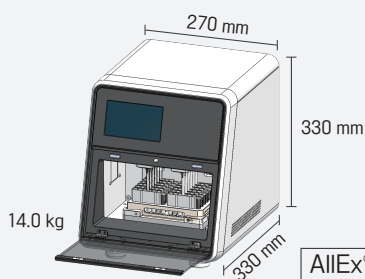
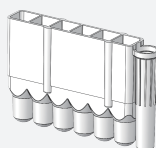
### 전과정 자동 핵산 추출

- Strip을 직접 장착할 필요 없이 자동으로 장착 및 탈착
- QR 코드 자동 스캔 기능으로 프로토콜 자동 선택
- 사용자 실수에 의한 오작동 최소화

### 고농도, 고순도의 핵산 추출

- GeneAll의 우수한 핵산 추출 기술력
- 쉽고 빠르게 고농도, 고순도의 핵산 추출 결과 보장

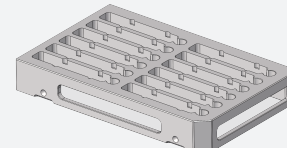
## Components

ALLEx<sup>®</sup> Mini

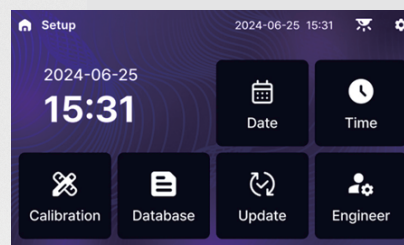
Cartridge



Strip



Cassette



## Specifications

Product	AllEx® Mini Automated Nucleic Acid Extraction System
Cat. No.	AEX012
Extraction technology	Magnetic bead-based nucleic acid extraction
Number of samples	Up to 12 samples
Dimensions (W x D x H)	270 x 330 x 330 mm
Weight	14.0 kg
Power requirements	85 - 264 VAC, 50/60 Hz, 3 A
Display	5" TFT LCD touch screen
Strip attachment and removal	Automated
Protocol loading	Automated
Barcode / QR code reader	Built-in barcode / QR code reader
Heating block	Individual control
Decontamination	UV-C LED
Noise	≤ 45 dB
Magnetic bead recovery rate	≥ 98 %
Operating temperature	15 ~ 30 °C
Operating humidity	20 ~ 80 % RH (non-condensing)



## Technical data

Table 1. DNA yield and purity

Sample	Amount	Protocol *	Mean yield (µg) **	A <sub>260</sub> /A <sub>280</sub>	A <sub>260</sub> /A <sub>230</sub>
Cells (K562)	1 × 10 <sup>6</sup> cells	P1	19.25	2.12	2.14
		P2	24.56	2.08	2.19
Cells (DH5α)	2 × 10 <sup>8</sup> cells	P1	11.84	1.84	1.87
		P2	18.49	1.98	1.85
Whole blood (human)	200 µl	P1	5.24	1.85	1.68
		P2	8.46	1.92	1.75
Spleen (mouse)	10 mg	P1	85.62	1.95	2.04
		P2	152.48	1.97	2.02
Liver (mouse)	20 mg	P1	89.20	1.89	1.98
		P2	143.20	1.95	2.01
Kidney (mouse)	15 mg	P1	52.54	1.91	1.98
		P2	85.34	1.95	2.01
Brain (mouse)	20 mg	P1	28.76	1.85	1.95
		P2	48.62	1.98	2.04
Tail (mouse)	20 mg	P1	48.70	1.85	1.91
		P2	61.20	1.93	1.87
Beef	30 mg	P1	9.58	1.84	1.78
		P2	17.62	1.95	1.87
Pork	30 mg	P1	11.21	1.87	1.84
		P2	17.46	1.92	1.90

\* Operating time (approx.): P1 protocol = 12 min, P2 protocol = 21 min

\*\* n=4

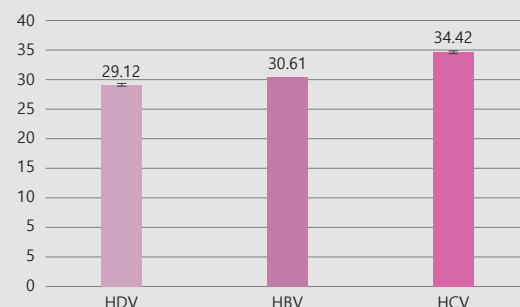


Figure 1. RT-qPCR on viral DNA and RNA extracted from standard positive plasma samples

Viral DNA and RNA were extracted from each sample infected with hepatitis delta virus (HDV), hepatitis B virus (HBV), and hepatitis C virus (HCV) using the AllEx® Mini Viral DNA/RNA Kit on the AllEx® Mini Automated Nucleic Acid Extraction System (P2 protocol). The extracted nucleic acids were used as a templates in qPCR and RT-qPCR for each virus (HBV: DNA virus; HDV and HCV: RNA virus), and specific genes were detected in all cases using commercial diagnostic kits.

## Ordering information

Category	Cat. No.	Product	Size
System	AEX012	AllEx® Mini Automated Nucleic Acid Extraction System	-
	971-048	AllEx® Mini Genomic DNA Kit	48T
Kit	972-048	AllEx® Mini Viral DNA/RNA Kit	48T
	973-048	AllEx® Mini Blood DNA Kit	48T
	974-048	AllEx® Mini Plant DNA/RNA Kit	48T
	975-048	AllEx® Mini Forensic DNA Kit	48T
	976-048	AllEx® Mini Fecal DNA/RNA Kit	48T
	977-048	AllEx® Mini Cell/Tissue Total RNA Kit	48T
	978-048	AllEx® Mini Plant Total RNA Kit	48T

